

Blackdown, Nr Upham

Pretty Cottage in a peaceful and secluded Hampshire valley setting.



Location:	Blackdown Nr Upham	Price pcm:	£1195 excl but inclusive of water and drainage
County:	Hampshire	Term:	Unfurnished 12 month Assured Shorthold Tenancy
Property ID:	1321		
Bedrooms:	2		
Bathrooms:	1		
Unfurnished			

Summary of Accommodation

Sitting Room
Study
Kitchen/Dining Room
2 Double Bedrooms
Bathroom
Full central heating
Store Room with electricity

Not suitable for children or most pets
Available Immediately



Description:

A very spacious, pretty cottage in a wonderful position overlooking the walled garden of a country house, located out of the village in a peaceful and secluded Hampshire valley setting.

The Sitting Room has a wood-burning stove while the Kitchen/Dining Room has traditional pine features/doors. The cottage has recently been re-carpeted and the bathroom refitted.

Upham is situated East of Winchester by approximately 5 miles with very good access to the city and also the M3 for Southampton or London bound, Winchester station to Waterloo is 55 minutes.

To let on an Assured Shorthold tenancy for 1 year unfurnished with carpets and curtains.

Councils

Tax Band: Winchester City Council Band E - £1,729.88 payable 2011/2012
Winchester City Council: Tel: 01962 848 288

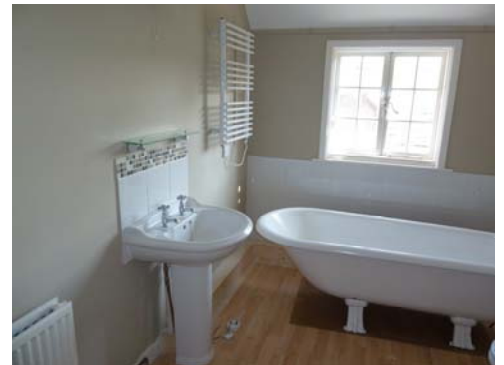
Availability:	Immediately
Broadband Availability:	Available locally
Mobile Phone Reception:	Most networks
White Goods:	Electric oven and hob, fridge
Curtains:	To principal windows
Carpets:	To principal rooms – Some new
Heating:	Full central heating
Drainage:	Private (inclusive)
Pets:	Not suitable for pets (cat considered)

EPC available on request
See our Website for Disclaimer Details

Viewing:

Strictly by appointment with The Country House Company, as many properties are already tenanted and we wish to respect their privacy.

Tel: 02392 632275 Email: info@country-house-company.co.uk



The Country House Company • The Granary • Whitedale Farm • East Street • Hambledon • Hampshire • PO7 4RZ

T. 02392 632 275 • F. 02392 632 098

sales@country-house-company.co.uk • lettings@country-house-company.co.uk • country-house-company.co.uk



The Country House Company is the trading name of Rushmere Country Estates LLP Registered in England No: 0C351808 VAT No: 754 904 708 Rushmere Farm, Hambledon, Hampshire PO7 4SG
The Country House Company regulated by RICS. S.P. Crossley MRICS FARLA, R.N. Crossley